

# AmpliClean™ LF

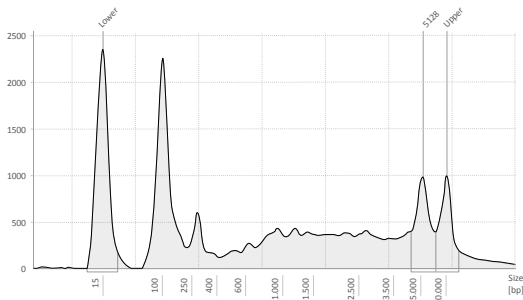
## ✓ Bead clean-up for long fragments

AmpliClean™ LF vastly outperforms competitor beads in clean-up of fragments ranging from 1 to 6kb, removing any undesired fragment sizes. Customer data demonstrated a marked improvement in sequencing output.

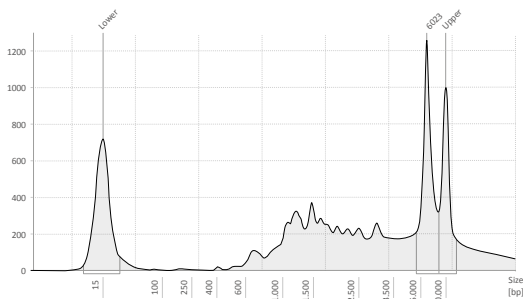


### Clean-up comparison AmpliClean™ LF versus AmpliClean™

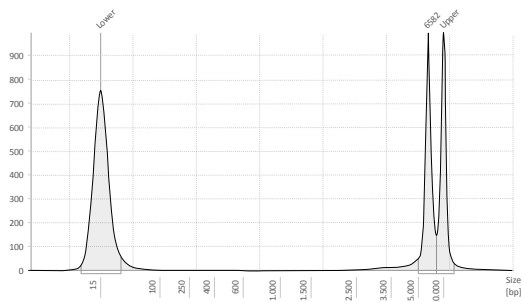
A library of amplicons of >4kb in size was used to compare the clean-up performance of AmpliClean™ LF with the drop-in replacement product AmpliClean™.



Unpurified RC-PCR product



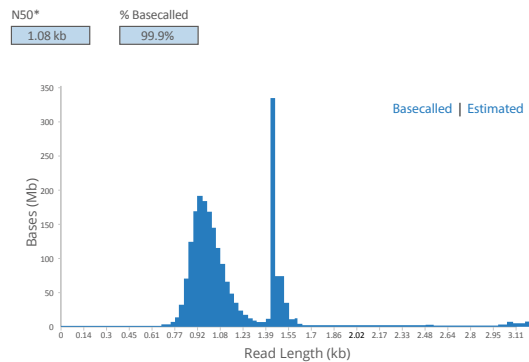
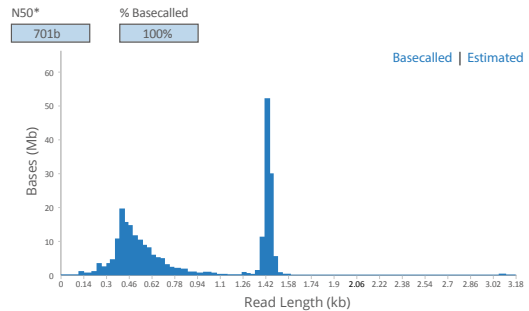
Library cleaned with AmpliClean™, Unwanted short fragments remain.



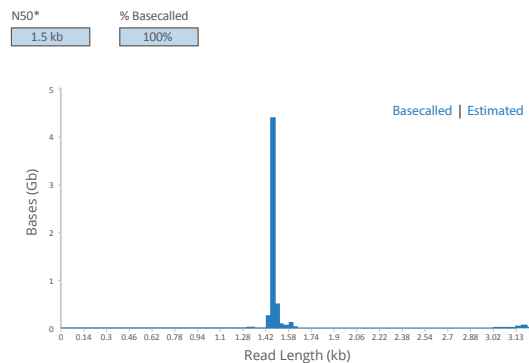
A clean purified library with AmpliClean™ LF

### Customer clean-up comparison AmpliClean™ LF

The customer compared AmpliClean™ LF clean-up to product B using Nanopore sequencing.



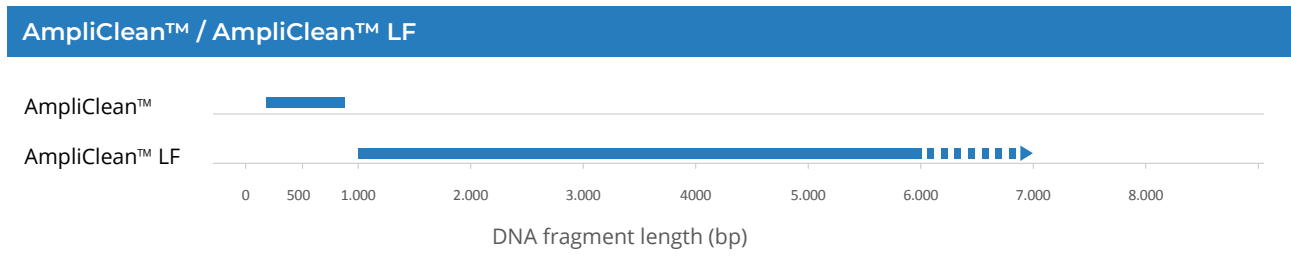
Sequencing report from two runs, clearly showing that smaller background reads were not properly removed by product B.



All background reads were removed with AmpliClean™ LF, improving sequencing output.

# Conclusion

AmpliClean™ LF outperforms Product B and standard AmpliClean™ beads in removing unwanted short DNA fragments. The product is optimized for  $\geq 1\text{kb}$  fragments, ensuring reliable size selection in any NGS workflow. Its simple bind-wash-elute process makes it ideal for manual workflows and compatible with automation.



## Product Description

### Superior long DNA fragment recovery

The AmpliClean™ LF Cleanup Kit ensures high recovery and superior-quality DNA without salt carryover. It uses paramagnetic bead-based technology for efficient DNA purification across PCR and Next-Generation Sequencing (NGS) applications. Optimized for  $\geq 1\text{kb}$  fragments, it provides consistent size selection in NGS workflows.

### Simple, automation-ready workflow

AmpliClean™ LF follows a three-step bind, wash, and elute process. PCR products selectively bind to magnetic beads, while an ethanol wash removes dyes, nucleotides, salts, and primers, leaving ultra-pure DNA. No centrifugation or vacuum filtration is required, making it fully compatible with automated liquid handlers and Alpaqua® magnet plates or manual single-tube stands.

- ✓ Optimized for Long DNA Fragments
- ✓ Automation-Compatible
- ✓ Superior DNA Purity & Recovery



Sample request?

Please contact us:  
info@nimagen.com  
+31 (0)24 820 02 41

# NimaGen.

## Product and Company Information

**NimaGen B.V.**  
Hogelandseweg 88  
6545 AB Nijmegen  
The Netherlands

**T** +31 (0)24 820 0241  
**E** info@nimagen.com  
**www.nimagen.com**

**Product Guide**  
AmpliClean™ LF

**Product Use**  
For Research Use Only

Version 1.2 - July 2025

### Legal Notice:

AmpliClean is registered trademark of NimaGen B.V.  
Alpaqua is a registered trademark of Alpaqua Engineering, LLC